

To Let - Smisby Manor, Smisby / £775.00 PCM / Ref: 000000564



2



2



1



2



- LARGE 2 bed barn conversion
- Rent Includes heating/water
- EER - tbc
- 2 en-suite shower rooms
- Private parking
- Beautiful Village location
- Full of character
- Viewing strongly recommended
- LARGE Kitchen/diner

To Let - Smisby Manor, Smisby / £775.00 PCM / Ref: 000000564

NEW TO MARKET A charming LARGE 2 bed 2 en-suite ground floor barn conversion.

(rent includes heating/water)

Set within the walls of Smisby manor and within the beautiful village of Smisby offering local walks and villages pub/restaurant, stunning surrounding countryside views.

This unique property comprising of first entrance hall second hall way.

Large modern kitchen/diner with cooker, hob, washer dryer, fridge freezer.

Large spacious lounge.

Two large bedroom with en-suite shower room on both..

Full of character which includes oak beam ceiling vaults.

Private parking.

Oil heating (included in rent)

Close by are good road links/motorway and local airports all within easy access of this village.

Viewing strongly recommended to secure this lovely property

Council tax band A

Our standard deposit is calculated based upon the passing rent, and varies from property to property, usually calculated at 5 weeks rent

For details of this and any other fees that may become due during the term of your tenancy please contact a member of our Lettings Team at our Ashby de la Zouch branch..

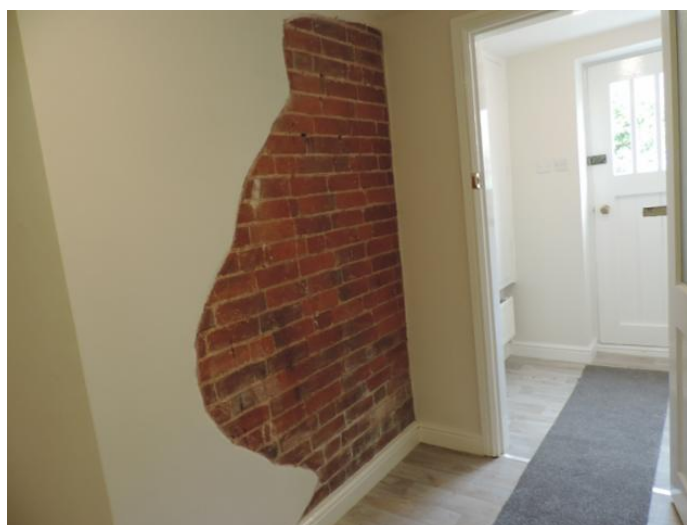
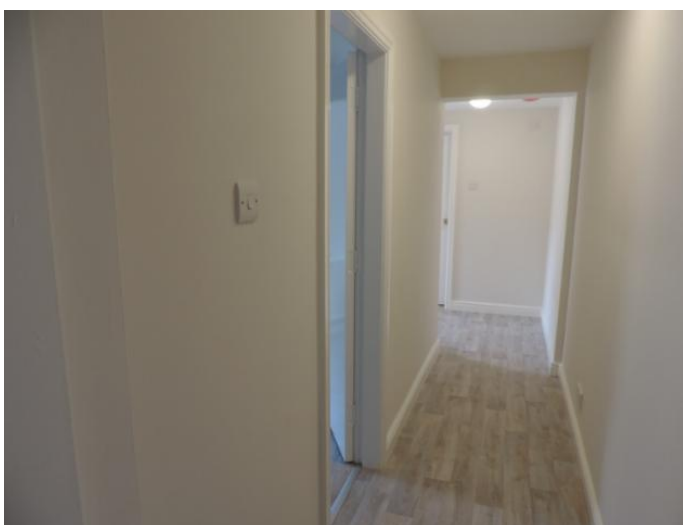
To Let - Smisby Manor, Smisby / £775.00 PCM / Ref: 000000564



To Let - Smisby Manor, Smisby / £775.00 PCM / Ref: 00000564



To Let - Smisby Manor, Smisby / £775.00 PCM / Ref: 000000564



To Let - Smisby Manor, Smisby / £775.00 PCM / Ref: 000000564

