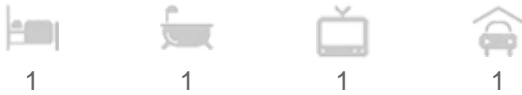


To Let - The Waterside Apartments, WestBridgford / £1,200.00 PCM / Ref: 00002088



- New to market and av now
- Iconic Development
- Council tax D
- Early viewing highly recommended

- Stylish Kitchen with appliances
- Quality fixtures and fittings
- EER - D

To Let - The Waterside Apartments, WestBridgeford / £1,200.00 PCM / Ref: 000002088

New to market and av now.

A stunning 1 bedroom apartment at The Waterside, with breath-taking river views of the Trent.

The apartments are entered via private entrance lobby offering a concierge welcome.

Viewing strongly recommended to secure this lovely property.

Situated on the 1st floor, A modern good size 1 bedroom apartment benefits from an open plan living, dining and kitchen area offering fridge freezer, cooker, hob, extractor.

Open plan lounge with views over looking the river.

Separate utility area with washer.

A generous double bedroom with built in wardrobes and again having views over the river,

Main bathroom with power shower.

Finished to a high standard, offered unfurnished.

Private allocated parking space.

Iconic development

Council tax band D

viewing strongly recommended to secure this lovely property.

Property Construction - Standard

Electricity Supply - Mains

Water Supply - Mains

Drainage Type - Mains Sewer

Heating Electric central heating.

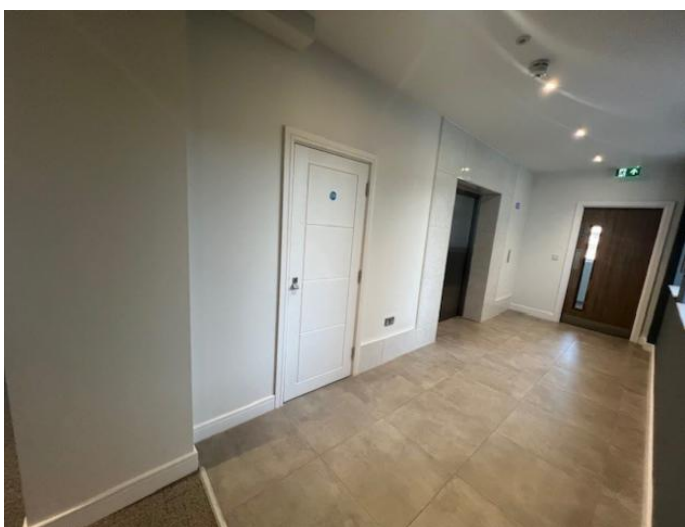
Broadband GFast Broadband

Mobile signal/coverage - You are likely to have good coverage according to Ofcom Mobile checker

Our standard deposit is calculated based upon the passing rent, and varies from property to property, usually calculated at 5 weeks rent.

For details of this and any other fees that may become due during the term of your tenancy please contact a member of our Lettings Team at our Ashby de la Zouch branch.

To Let - The Waterside Apartments, WestBridgford / £1,200.00 PCM / Ref: 00002088



To Let - The Waterside Apartments, WestBridgford / £1,200.00 PCM / Ref: 000002088



To Let - The Waterside Apartments, WestBridgeford / £1,200.00 PCM / Ref: 00002088

